

# „Jøtul Pellet Control” application

EN - Installation and configuration instructions

2



EN - Before use, read the general instructions of installation, use and maintenance carefully



*The instruction manual provided with the product must be kept throughout the entire period of the products use.*

## 1 CONNECTION TO COMMUNICATION MODULE

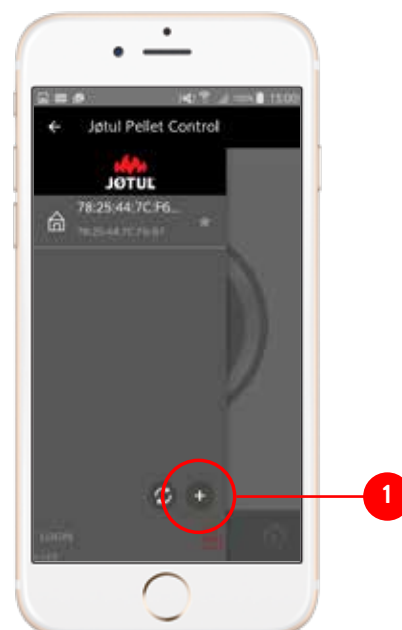
Using the “Jøtul Pellet Control” application is very easy! All you have to do is connect the communication module to the stove or Jøtul pellet insert, configure the connection to the smartphone, and it's ready!

### Connection method:

- 1) Log in to the App Store or Google Play and download the “Jøtul Pellet Control” application.
- 2) Start the “Jøtul Pellet Control” application.
- 3) Read and accept the terms of use.

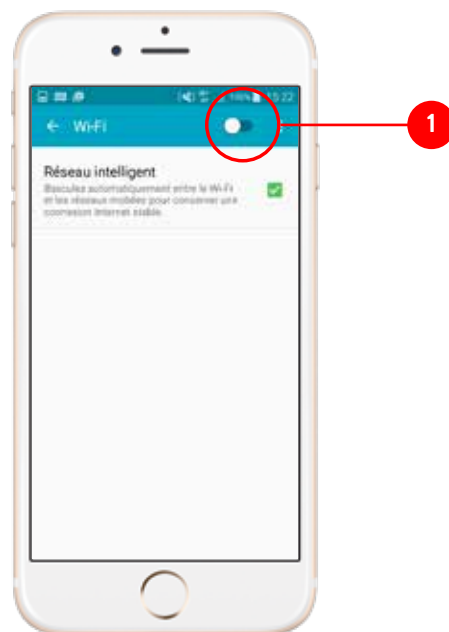
- 4) The configuration procedure will begin automatically: start by connecting the communication module to the stove or Jøtul pellet insert as well as to the electrical grid, and follow the steps according to the instructions. Press “OK, I have connected the CBox”.

If the configuration procedure does not begin automatically, press the button in the Menu **1**.

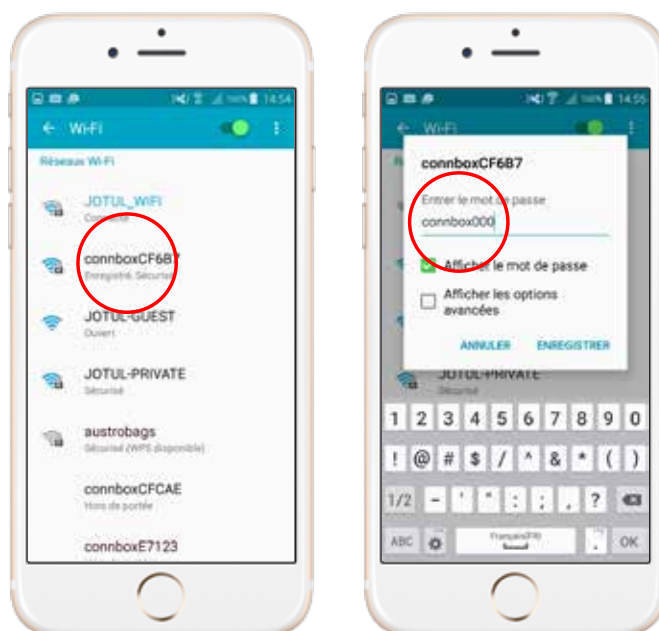


5) Open the settings menu on your smartphone and select “Wi-Fi”.

If necessary, turn Wi-Fi connectivity on **1**.



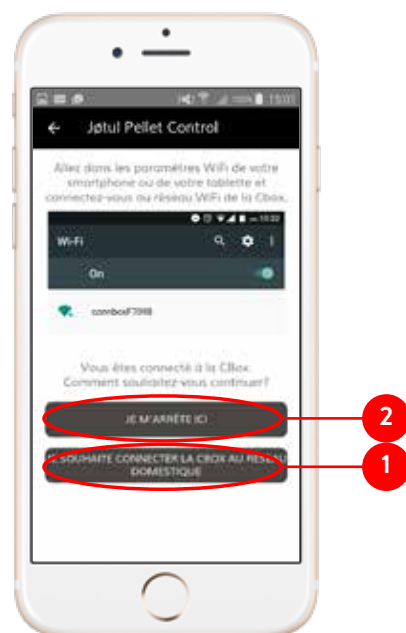
Among the available networks, select the network of the communication module (“connboxXXXXXXXX”) and enter the following password connbox000.



# ENGLISH

- 6) Reopen the “Jøtul Pellet Control” application: the configuration procedure will be continued automatically.

To connect the CBox to the home network, press the “I want to connect CBox to a home network” button **1**.



The “Jøtul Pellet Control” application will find the communication module and immediately begin searching for a Wi-Fi network to which the device can connect.



**If the application cannot find a network:**

- **the communication module is in a position where it cannot find a signal: change position slightly and try again;**

or

- **you don't have a Wi-Fi connection: press “I am stopping here” **2** and use your smartphone as a remote control for your stove!**



- 7) Among the Wi-Fi networks found, select your home network and input the password associated with it to make a connection.



The communication module is now connected to the Wi-Fi network in your home.

After several seconds, the smartphone will automatically reconnect to your Wi-Fi network, and your stove will be “visible” in the application.

**Now you can use your smartphone as a remote control for your appliance!**



## 2 CONNECTING THE MODULE TO THE INTERNET

By connecting the communication module to the Internet, you will be able to control the stove or insert wherever you are.

The communication module is now connected to the Internet through the Wi-Fi network in your home.

- 1) To connect the communication module to the Internet, you must first create an account.

Start the “Jøtul Pellet Control” application, press the Menu button, then press the “Login” button.



- 2) Press “Don’t have an account? Sign up”.

Enter a correct e-mail address and select a password **1**.

Press “Enter” **2**.

You will receive an e-mail with a link. Click this link to confirm your registration. If you have not registered, you will not be able to control your stove’s functions through the Internet.



# ENGLISH

After creating an account, the username (corresponding to your e-mail address) will be visible in the lower left part of the screen.



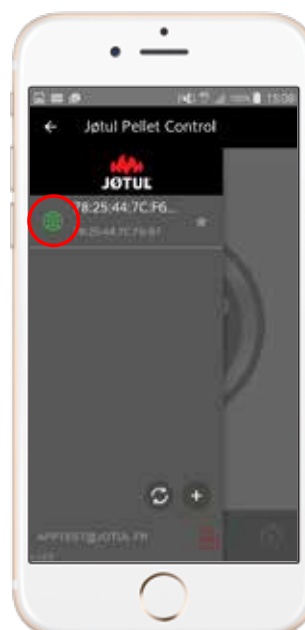
3) Select your stove from the list.  
On the home screen, press the Settings button, then activate the “Connect to Internet” function.

Confirm by pressing “Yes”.

Next, enter the appliance’s serial number (LT + 21 digits), which is found on the back of the pellet container, on the CE label.



4) The stove or insert is now connected to the Internet, which is signalled by a lit-up icon.





Manual Version P01  
September 2020

Jøtul continuously strives to improve its products. In relation to this, it reserves the right to change specifications, colours and accessories without prior notice.

If you have any questions concerning this appliance, send your question via e-mail to:  
***[jotulpelletcontrol@jotul.fr](mailto:jotulpelletcontrol@jotul.fr)***



Jøtul France  
3, chemin du Jubin  
69574 DARDILLY  
[www.jotul.com/fr](http://www.jotul.com/fr)